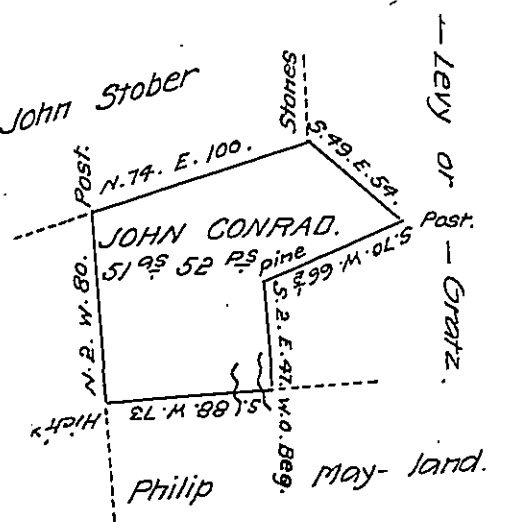


Note. The whole of this Survey is claimed by a M^r Gratz of the City of Philadelphia, who has a Tenant in possession.



The Draught of a tract of land Situate in Haines Township, formerly Northumberland,
 now Centre County Containing fifty one Acres & fifty two perches and Allowance of
 Six per. cent &c. Surveyed the 19th June 1816 in pursuance of a warrant Granted to
 John Conrad dated the 12th day of September 1792.

W^m Kerr. D.S.

To Richard T. Leech. Esq^r
 Surveyor General of Pennsylvania.

IN TESTIMONY that the above is a copy of the original remaining on file in
 the Department of Internal Affairs of Pennsylvania, made
 conformably to an Act of Assembly approved the 16th day of
 February, 1833, I have hereunto set my Hand and caused
 the Seal of said Department to be affixed at Harrisburg,
 this twenty fourth day of February 1908.

Henry Auer
 Secretary of Internal Affairs.